

J:\190610\3\_Acadwg\Survey\Lot Exhibits\190610\_B1L4\_COVER.dwg, 8/7/2024 4:11:53 PM, Joanna Litalien, \_DWG To PDF.pc3

©2024 ARDURRA GROUP, INC. THIS INSTRUMENT IS THE PROPERTY OF ARDURRA. ANY REPRODUCTION, REUSE OR MODIFICATION OF THIS INSTRUMENT WITHOUT SPECIFIC WRITTEN PERMISSION OF ARDURRA IS STRICTLY PROHIBITED

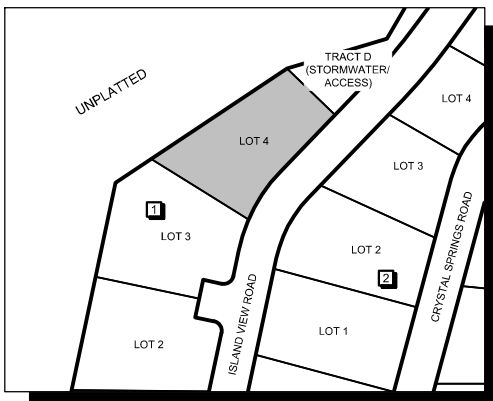
# BLOCK 1, LOT 4

LOCATED IN A PORTION OF SECTION 20,  
TOWNSHIP 58 NORTH, RANGE 2 WEST, BOISE MERIDIAN,  
BONNER COUNTY, IDAHO

BLOCK 1, LOT 4

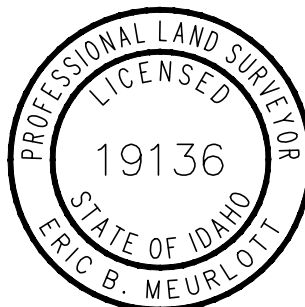


1000' 0 1000' 2000'  
SCALE FEET



**BLOCK 1, LOT 4**  
SCALE: 1" = 200'

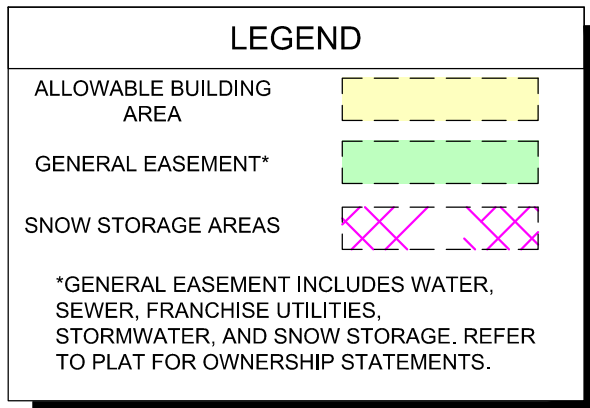
*Eric B Meurlott*  
08/08/2024



DATE: 8/7/24 JOB: 190610

  
7950 N. MEADOWLARK WAY, SUITE A  
COEUR D'ALENE, IDAHO 83815  
208-762-3644 | WWW.ARDURRA.COM

LOCATED IN A PORTION OF SECTION 20,  
TOWNSHIP 58 NORTH, RANGE 2 WEST, BOISE MERIDIAN,  
BONNER COUNTY, IDAHO



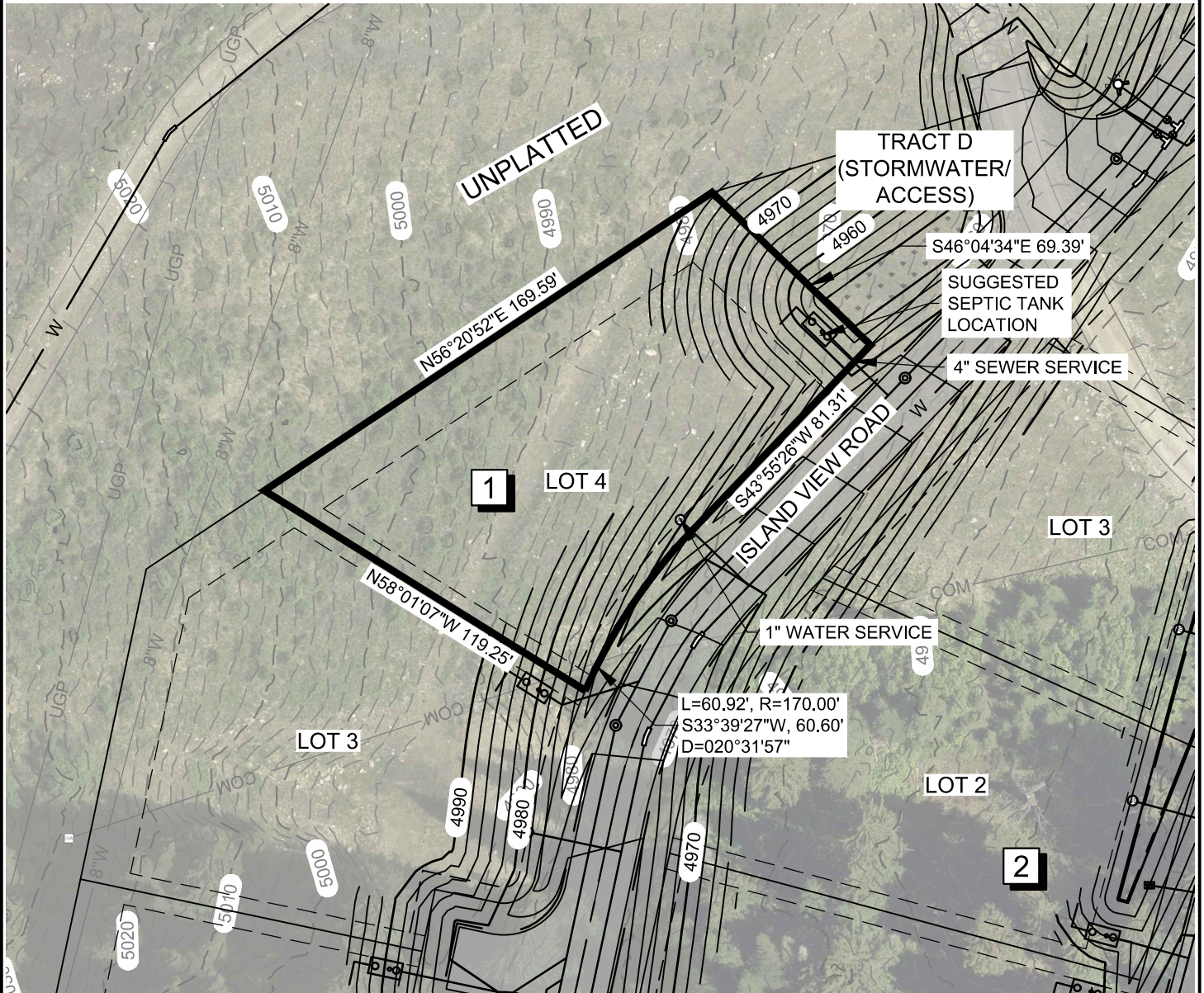
A circular seal for a Professional Land Surveyor. The outer ring contains the text "PROFESSIONAL LAND SURVEYOR" at the top and "ERIC B. MEURLOTT" at the bottom. The inner ring contains the word "LICENSED" at the top and "STATE OF IDAHO" at the bottom. In the center of the seal is the license number "19136".





# BLOCK 1, LOT 4

LOCATED IN A PORTION OF SECTION 20,  
TOWNSHIP 58 NORTH, RANGE 2 WEST, BOISE MERIDIAN,  
BONNER COUNTY, IDAHO

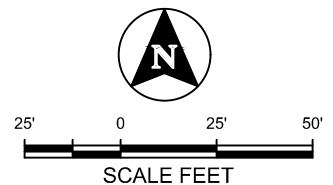


## NOTES:

1. SUBDIVISION IS CURRENTLY UNDER CONSTRUCTION. ALL IMPROVEMENTS SHOWN ARE DESIGNED LOCATION AND MAY NOT BE FINAL LOCATION.
2. CONTOURS ARE SHOWN AT 2' INTERVALS.
3. BEARINGS AND DISTANCES SHOWN ARE FOR SCHEMATIC PURPOSES ONLY. VERIFY LOT GEOMETRY WITH THE FINAL PLAT, WHEN RECORDED.

*Eric B Meurlott*

08/08/2024



DATE: 8/7/24 JOB: 190610

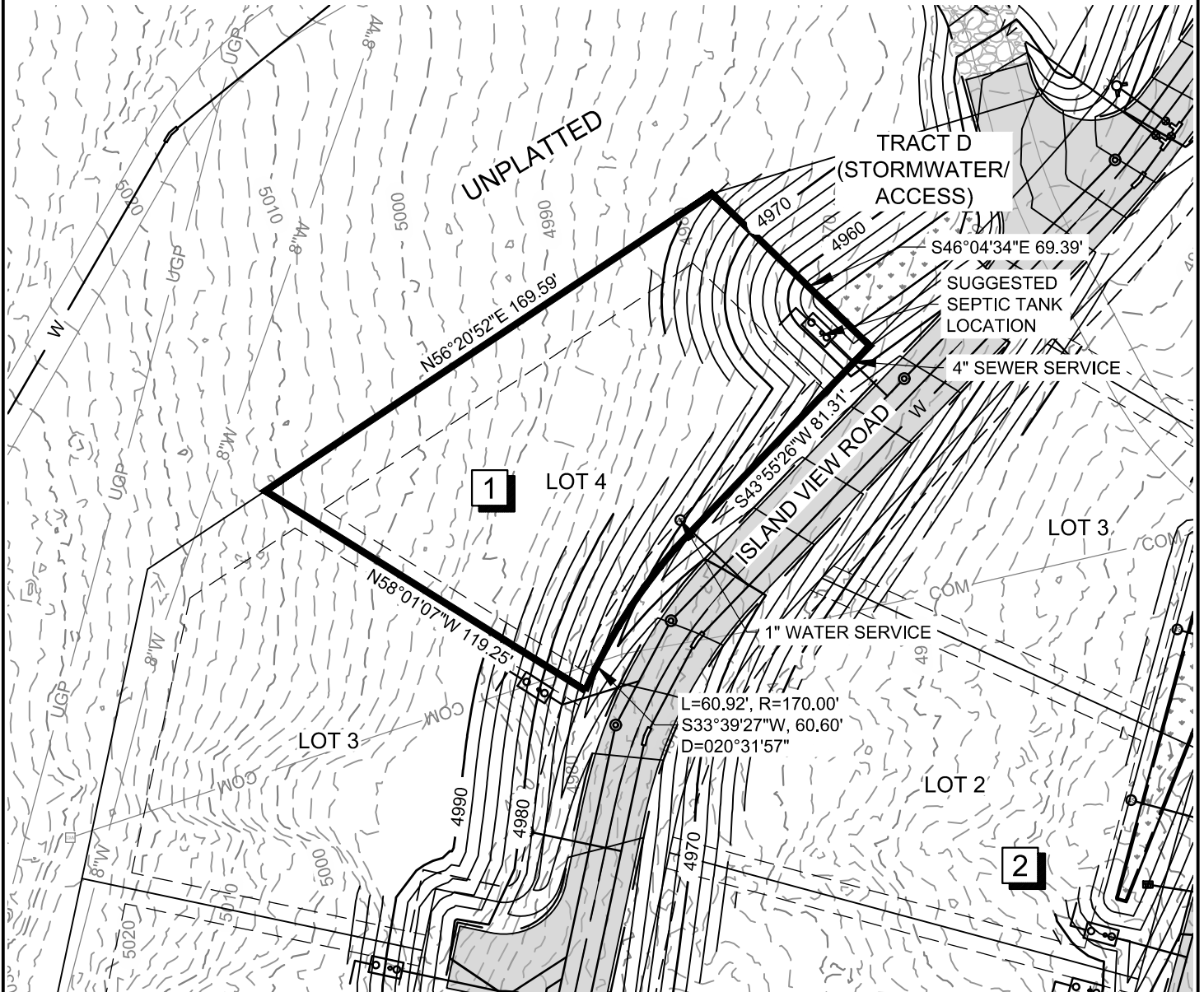
**ARDURRA**

7950 N. MEADOWLARK WAY, SUITE A  
COEUR D'ALENE, IDAHO 83815

208-762-3644 | WWW.ARDURRA.COM

# BLOCK 1, LOT 4

LOCATED IN A PORTION OF SECTION 20,  
TOWNSHIP 58 NORTH, RANGE 2 WEST, BOISE MERIDIAN,  
BONNER COUNTY, IDAHO

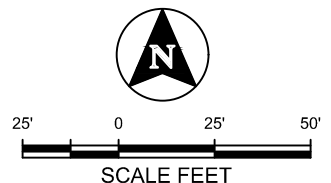
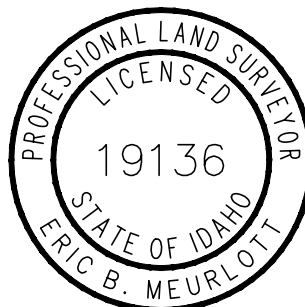


## NOTES:

1. SUBDIVISION IS CURRENTLY UNDER CONSTRUCTION. ALL IMPROVEMENTS SHOWN ARE DESIGNED LOCATION AND MAY NOT BE FINAL LOCATION.
2. CONTOURS ARE SHOWN AT 2' INTERVALS.
3. BEARINGS AND DISTANCES SHOWN ARE FOR SCHEMATIC PURPOSES ONLY. VERIFY LOT GEOMETRY WITH THE FINAL PLAT, WHEN RECORDED.

*Eric B Meurlo*

08/08/2024



DATE: 8/7/24 JOB: 190610

**ARDURRA**

7950 N. MEADOWLARK WAY, SUITE A  
COEUR D'ALENE, IDAHO 83815

208-762-3644 | WWW.ARDURRA.COM