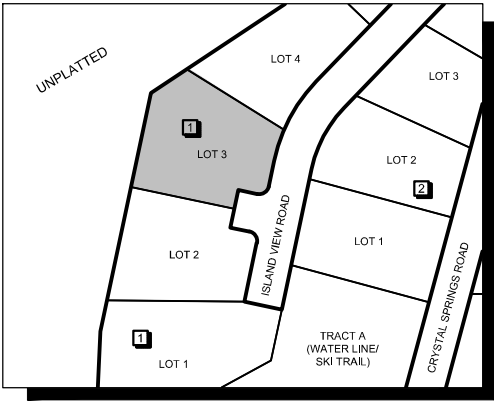
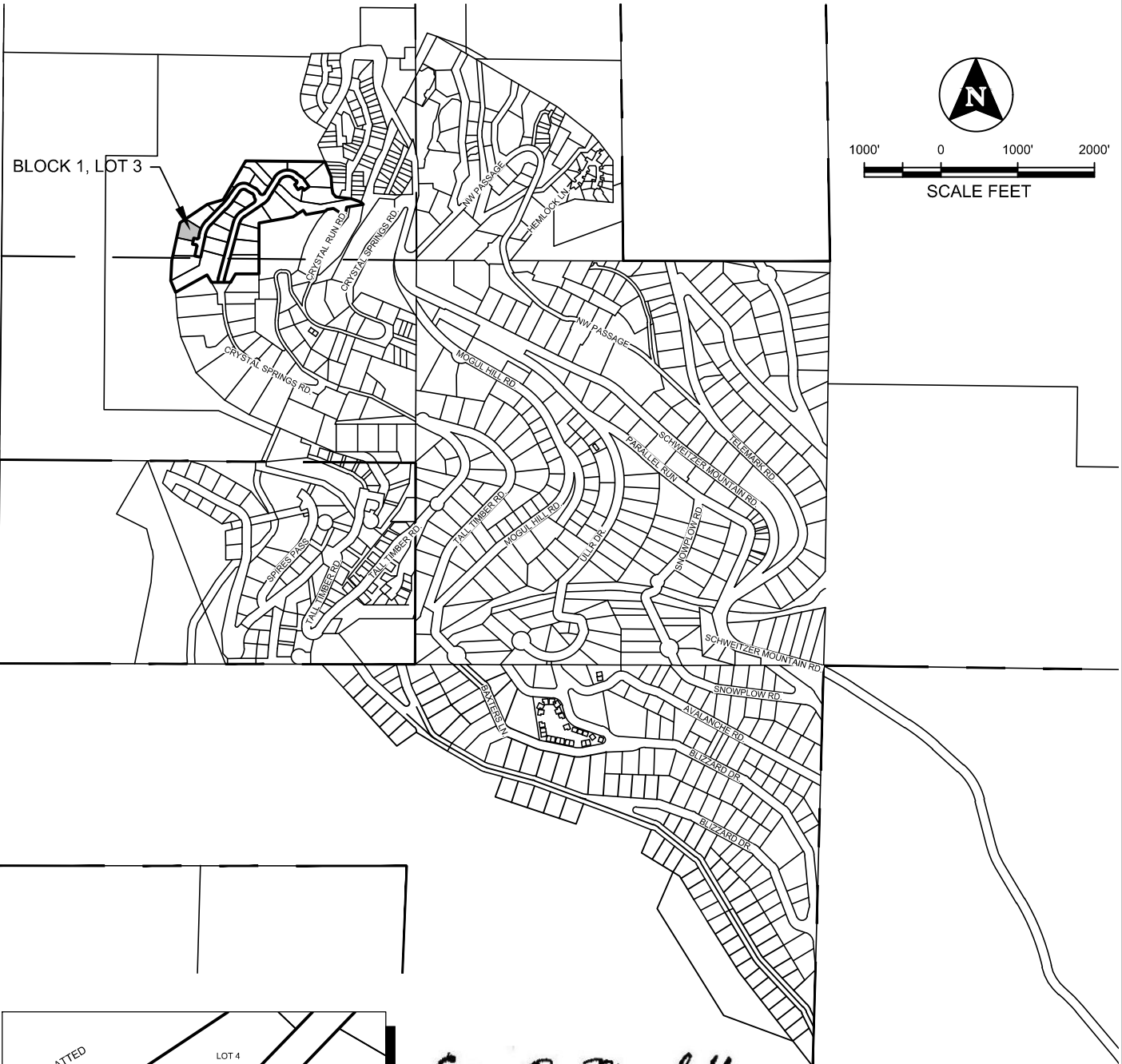


J:\190610\3\_Acadwg\Survey\Lot Exhibits\190610\_B1\3\_COVER.dwg, 8/7/2024 4:10:07 PM, Joanna Litalien, \_DWG To PDF.pc3

©2024 ARDURRA GROUP, INC. THIS INSTRUMENT IS THE PROPERTY OF ARDURRA. ANY REPRODUCTION, REUSE OR MODIFICATION OF THIS INSTRUMENT WITHOUT SPECIFIC WRITTEN PERMISSION OF ARDURRA IS STRICTLY PROHIBITED

# BLOCK 1, LOT 3

LOCATED IN A PORTION OF SECTION 20,  
TOWNSHIP 58 NORTH, RANGE 2 WEST, BOISE MERIDIAN,  
BONNER COUNTY, IDAHO



**BLOCK 1, LOT 3**  
SCALE: 1" = 200'

*Eric B Meurlott*  
08/08/2024



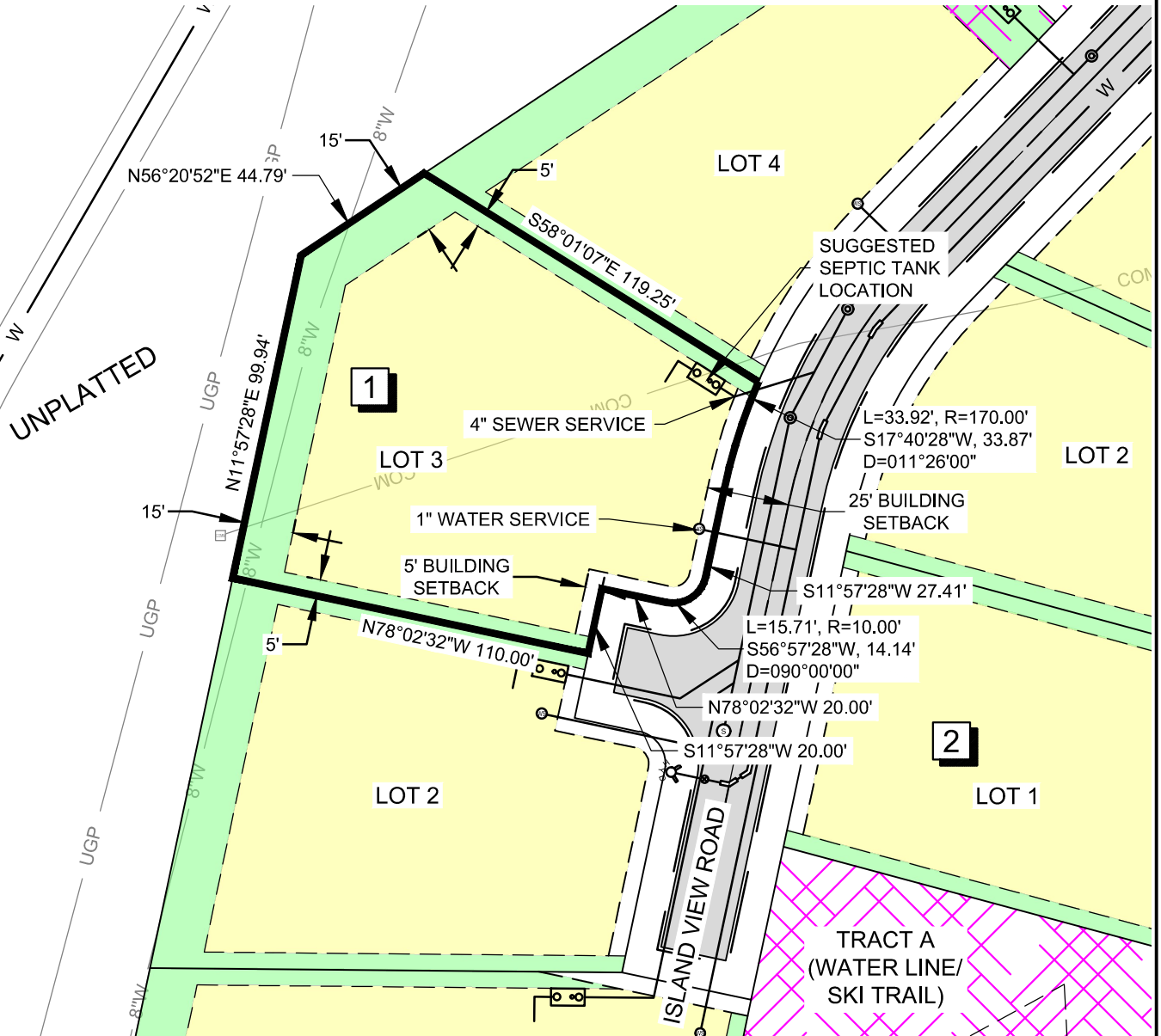
DATE: 8/7/24 JOB: 190610



7950 N. MEADOWLARK WAY, SUITE A  
COEUR D'ALENE, IDAHO 83815  
208-762-3644 | WWW.ARDURRA.COM

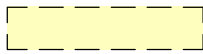
# BLOCK 1, LOT 3

LOCATED IN A PORTION OF SECTION 20,  
TOWNSHIP 58 NORTH, RANGE 2 WEST, BOISE MERIDIAN,  
BONNER COUNTY, IDAHO



## LEGEND

ALLOWABLE BUILDING  
AREA



GENERAL EASEMENT\*



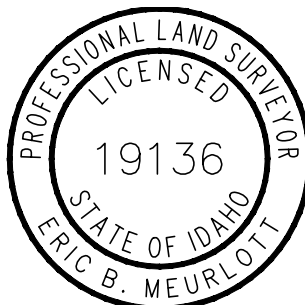
SNOW STORAGE AREAS



\*GENERAL EASEMENT INCLUDES WATER,  
SEWER, FRANCHISE UTILITIES,  
STORMWATER, AND SNOW STORAGE. REFER  
TO PLAT FOR OWNERSHIP STATEMENTS.

*Eric B Meurlo*

08/08/2024



25' 0 25' 50'  
SCALE FEET

DATE: 8/7/24 JOB: 190610

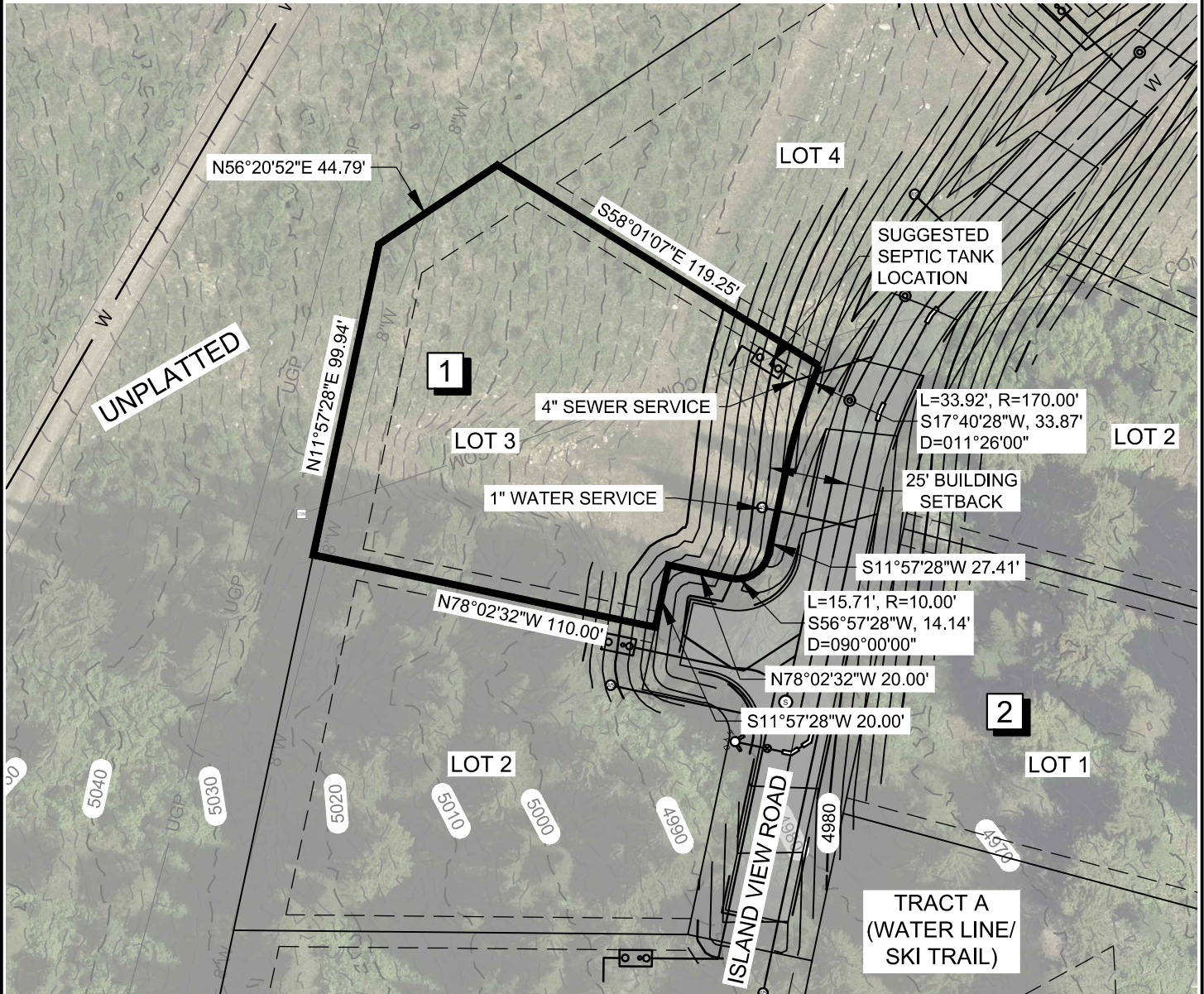


7950 N. MEADOWLARK WAY, SUITE A  
COEUR D'ALENE, IDAHO 83815

208-762-3644 | WWW.ARDURRA.COM

# BLOCK 1, LOT 3

LOCATED IN A PORTION OF SECTION 20,  
TOWNSHIP 58 NORTH, RANGE 2 WEST, BOISE MERIDIAN,  
BONNER COUNTY, IDAHO

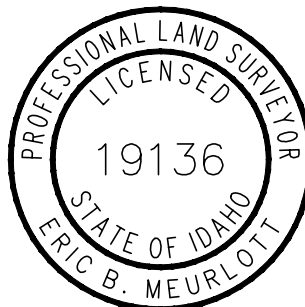


## NOTES:

1. SUBDIVISION IS CURRENTLY UNDER CONSTRUCTION. ALL IMPROVEMENTS SHOWN ARE DESIGNED LOCATION AND MAY NOT BE FINAL LOCATION.
2. CONTOURS ARE SHOWN AT 2' INTERVALS.
3. BEARINGS AND DISTANCES SHOWN ARE FOR SCHEMATIC PURPOSES ONLY. VERIFY LOT GEOMETRY WITH THE FINAL PLAT, WHEN RECORDED.

*Eric B Meurlo*

08/08/2024



DATE: 8/7/24 JOB: 190610



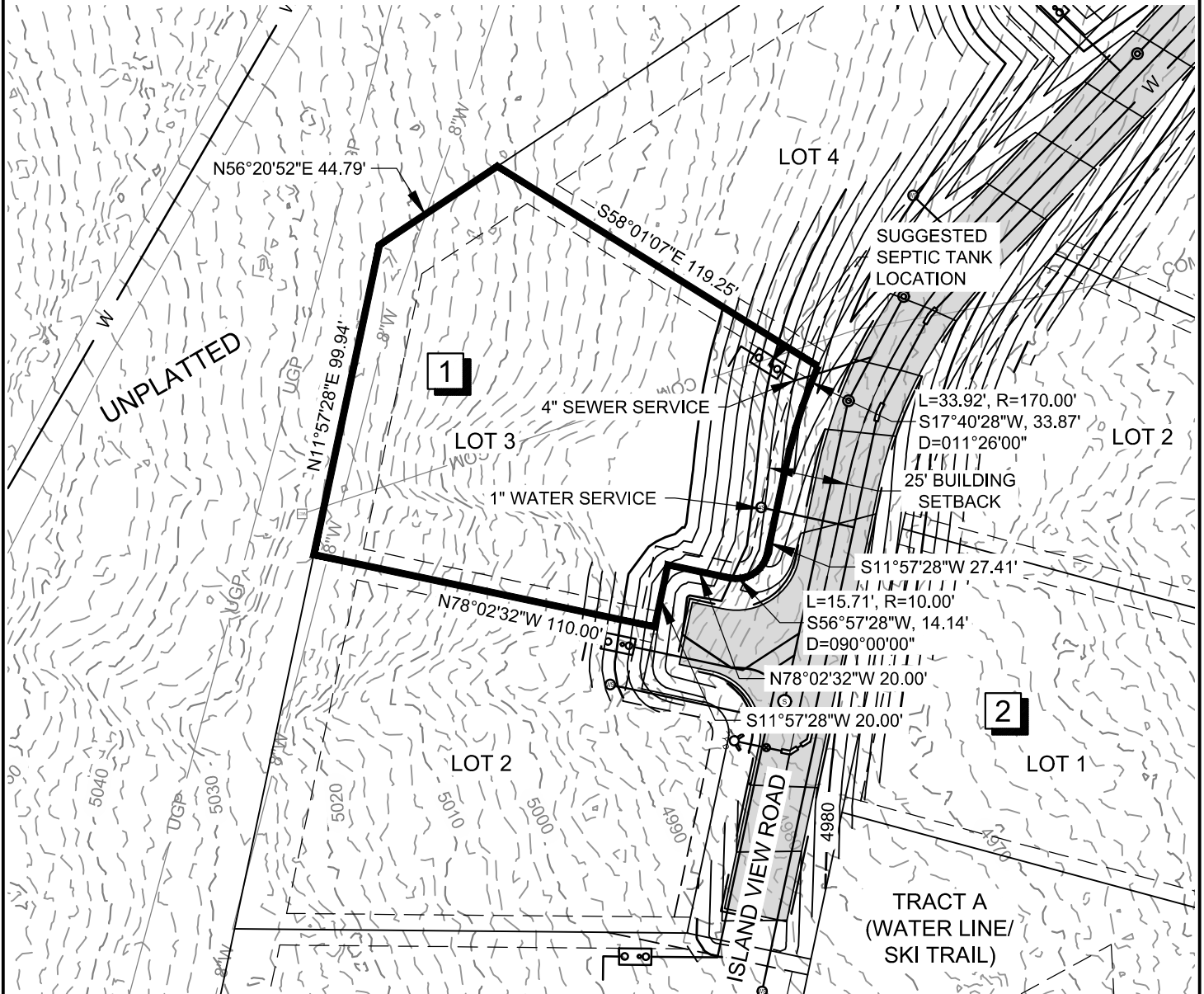
7950 N. MEADOWLARK WAY, SUITE A  
COEUR D'ALENE, IDAHO 83815

208-762-3644 | WWW.ARDURRA.COM



# BLOCK 1, LOT 3

LOCATED IN A PORTION OF SECTION 20,  
TOWNSHIP 58 NORTH, RANGE 2 WEST, BOISE MERIDIAN,  
BONNER COUNTY, IDAHO

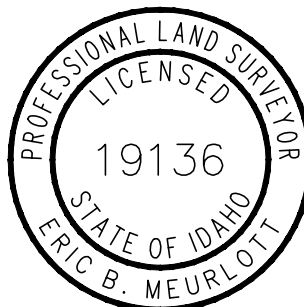


## NOTES:

1. SUBDIVISION IS CURRENTLY UNDER CONSTRUCTION. ALL IMPROVEMENTS SHOWN ARE DESIGNED LOCATION AND MAY NOT BE FINAL LOCATION.
2. CONTOURS ARE SHOWN AT 2' INTERVALS.
3. BEARINGS AND DISTANCES SHOWN ARE FOR SCHEMATIC PURPOSES ONLY. VERIFY LOT GEOMETRY WITH THE FINAL PLAT, WHEN RECORDED.

*Eric B Meurlott*

08/08/2024



25' 0 25' 50'  
SCALE FEET

DATE: 8/7/24 JOB: 190610



7950 N. MEADOWLARK WAY, SUITE A  
COEUR D'ALENE, IDAHO 83815

208-762-3644 | WWW.ARDURRA.COM