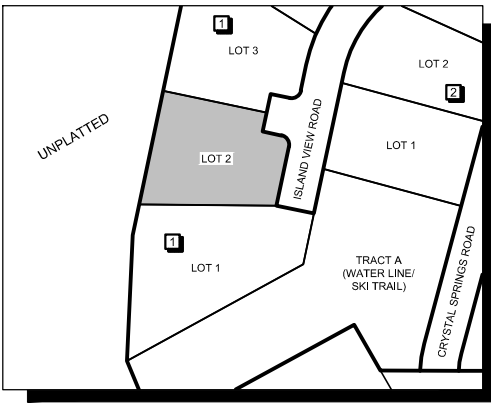
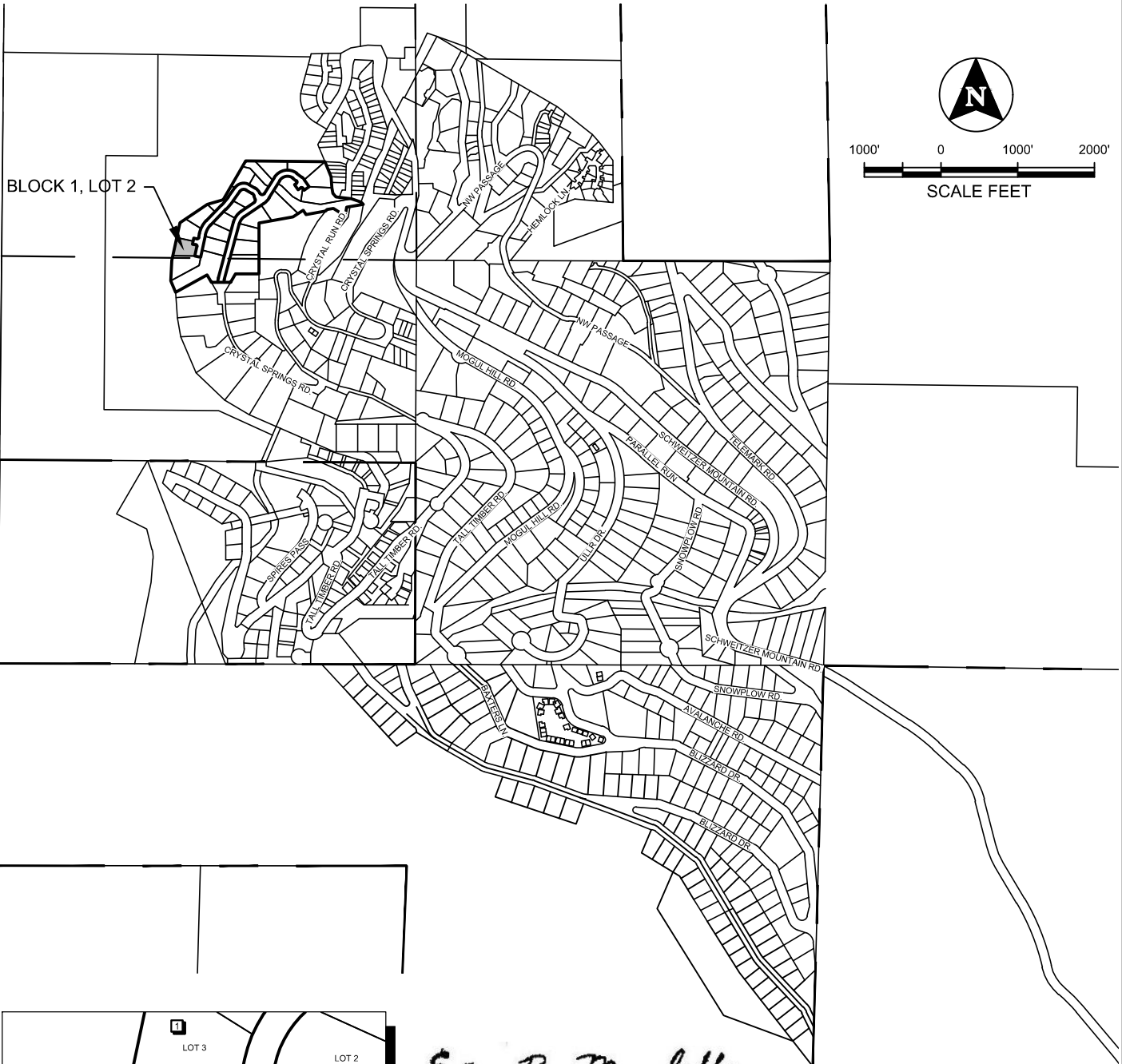


J:\190610\3_Acadwg\Survey\Lot Exhibits\190610_B1L2_COVER.dwg, 8/7/2024 4:08:16 PM, Joanna Litalien, _DWG To PDF.pc3

©2024 ARDURRA GROUP, INC. THIS INSTRUMENT IS THE PROPERTY OF ARDURRA. ANY REPRODUCTION, REUSE OR MODIFICATION OF THIS INSTRUMENT WITHOUT SPECIFIC WRITTEN PERMISSION OF ARDURRA IS STRICTLY PROHIBITED

BLOCK 1, LOT 2

LOCATED IN A PORTION OF SECTION 20,
TOWNSHIP 58 NORTH, RANGE 2 WEST, BOISE MERIDIAN,
BONNER COUNTY, IDAHO



BLOCK 1, LOT 2
SCALE: 1" = 200'

Eric B Meurlott
08/08/2024



DATE: 8/7/24 JOB: 190610



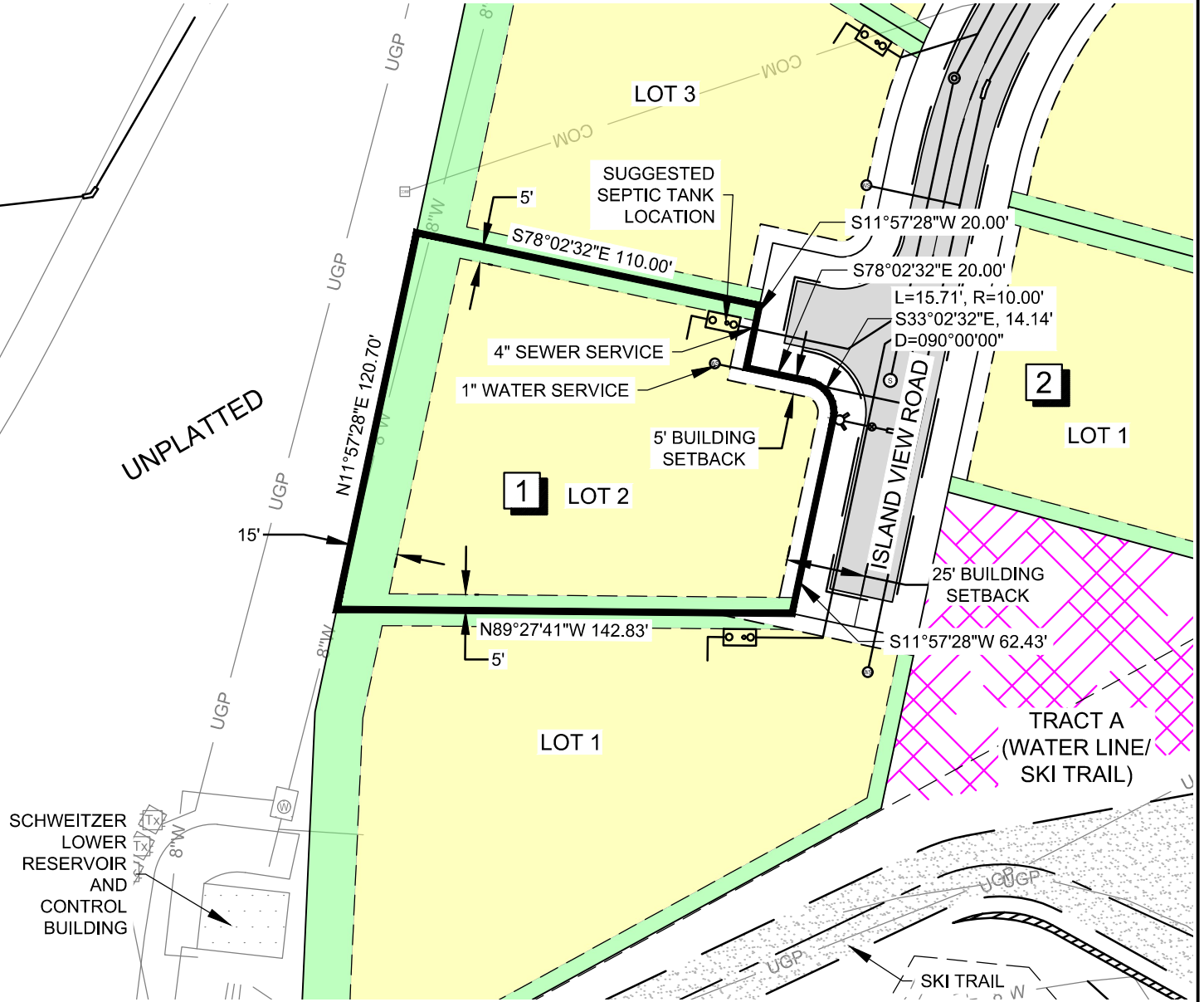
7950 N. MEADOWLARK WAY, SUITE A
COEUR D'ALENE, IDAHO 83815
208-762-3644 | WWW.ARDURRA.COM

J:\190610\3_Acadwg\Survey\Lot Exhibits\190610_B1\2_EXHIBIT.dwg, 8/7/2024 4:08:41 PM, Joanna Litalien, _DWG To PDF-.pc3

©2024 ARDURRA GROUP, INC. THIS INSTRUMENT IS THE PROPERTY OF ARDURRA. ANY REPRODUCTION, REUSE OR MODIFICATION OF THIS INSTRUMENT WITHOUT SPECIFIC WRITTEN PERMISSION OF ARDURRA IS STRICTLY PROHIBITED

BLOCK 1, LOT 2

LOCATED IN A PORTION OF SECTION 20,
TOWNSHIP 58 NORTH, RANGE 2 WEST, BOISE MERIDIAN,
BONNER COUNTY, IDAHO



LEGEND

ALLOWABLE BUILDING AREA



GENERAL EASEMENT*



SNOW STORAGE AREAS



*GENERAL EASEMENT INCLUDES WATER, SEWER, FRANCHISE UTILITIES, STORMWATER, AND SNOW STORAGE. REFER TO PLAT FOR OWNERSHIP STATEMENTS.

Eric B Meurlo
08/08/2024



25' 0 25' 50'
SCALE FEET

DATE: 8/7/24 JOB: 190610

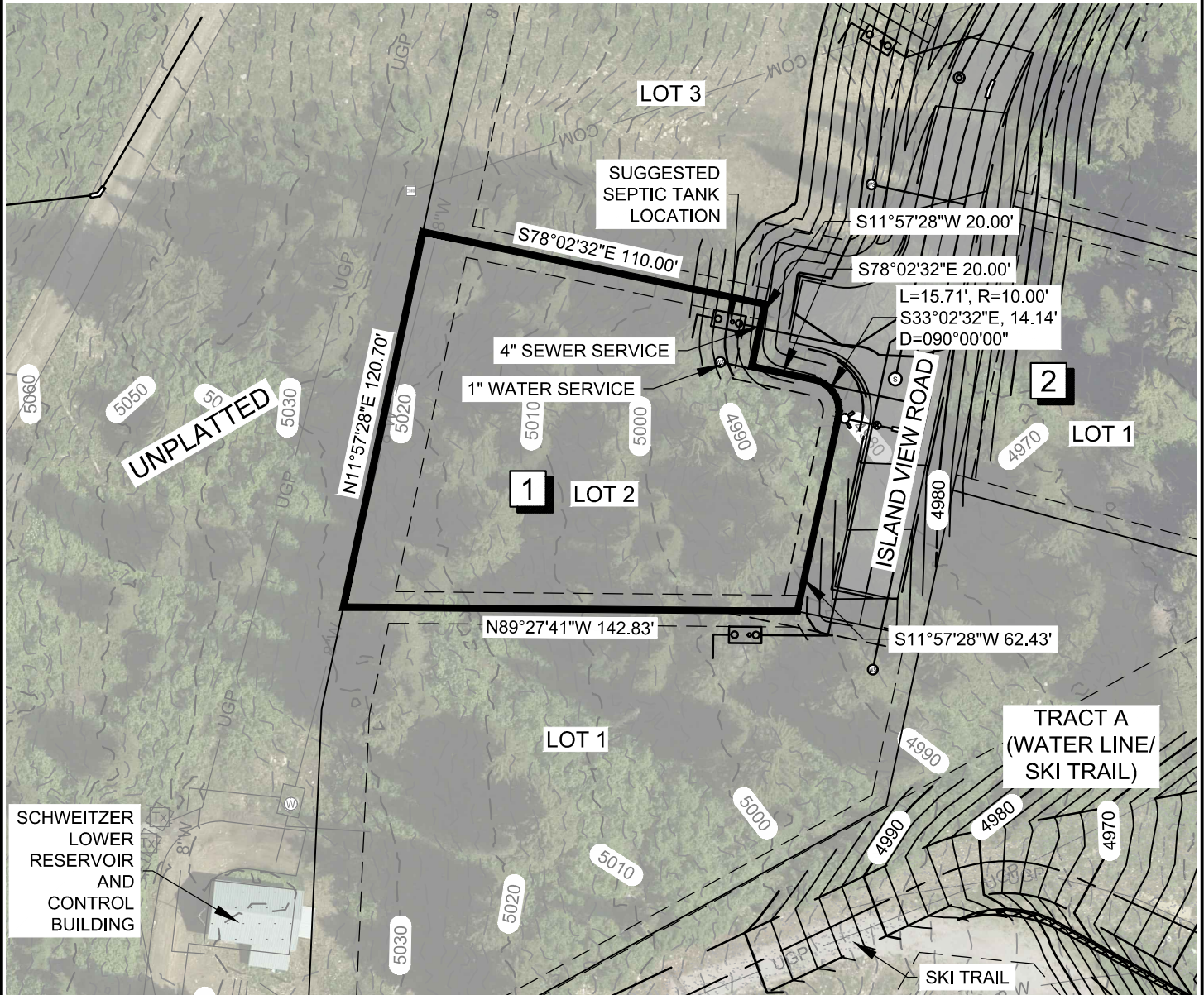


7950 N. MEADOWLARK WAY, SUITE A
COEUR D'ALENE, IDAHO 83815

208-762-3644 | WWW.ARDURRA.COM

BLOCK 1, LOT 2

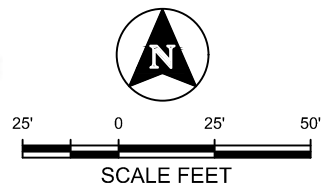
LOCATED IN A PORTION OF SECTION 20,
TOWNSHIP 58 NORTH, RANGE 2 WEST, BOISE MERIDIAN,
BONNER COUNTY, IDAHO



NOTES:

1. SUBDIVISION IS CURRENTLY UNDER CONSTRUCTION. ALL IMPROVEMENTS SHOWN ARE DESIGNED LOCATION AND MAY NOT BE FINAL LOCATION.
2. CONTOURS ARE SHOWN AT 2' INTERVALS.
3. BEARINGS AND DISTANCES SHOWN ARE FOR SCHEMATIC PURPOSES ONLY. VERIFY LOT GEOMETRY WITH THE FINAL PLAT, WHEN RECORDED.

Eric B Meurlo
08/08/2024



DATE: 8/7/24 JOB: 190610

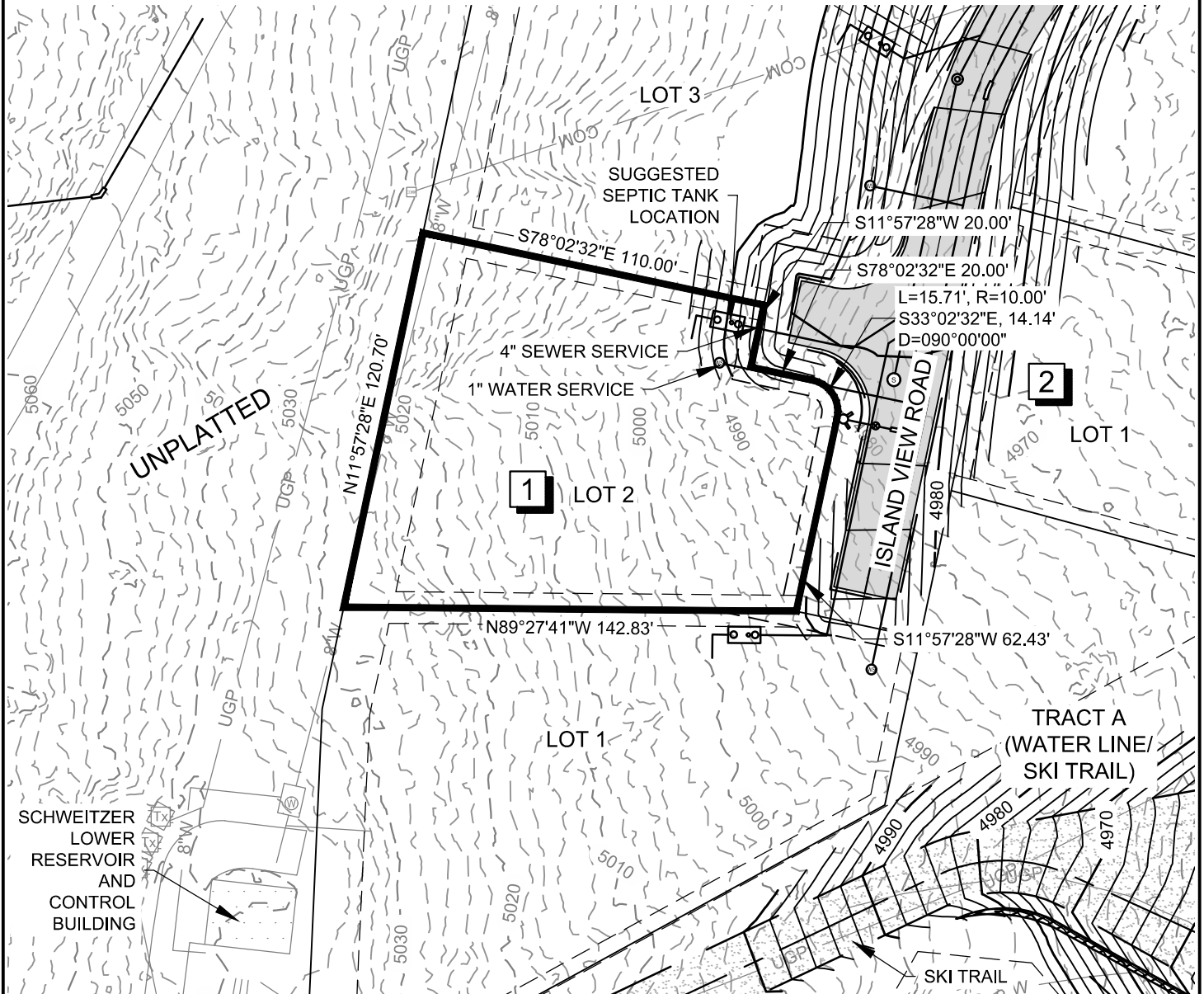
ARDURRA

7950 N. MEADOWLARK WAY, SUITE A
COEUR D'ALENE, IDAHO 83815

208-762-3644 | WWW.ARDURRA.COM

BLOCK 1, LOT 2

LOCATED IN A PORTION OF SECTION 20,
TOWNSHIP 58 NORTH, RANGE 2 WEST, BOISE MERIDIAN,
BONNER COUNTY, IDAHO

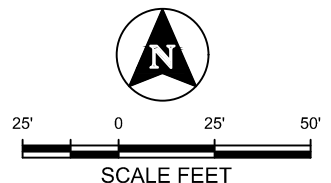
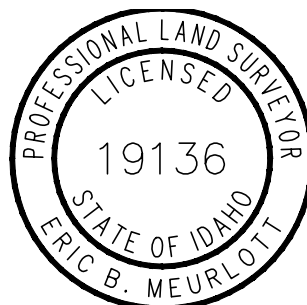


NOTES:

1. SUBDIVISION IS CURRENTLY UNDER CONSTRUCTION. ALL IMPROVEMENTS SHOWN ARE DESIGNED LOCATION AND MAY NOT BE FINAL LOCATION.
2. CONTOURS ARE SHOWN AT 2' INTERVALS.
3. BEARINGS AND DISTANCES SHOWN ARE FOR SCHEMATIC PURPOSES ONLY. VERIFY LOT GEOMETRY WITH THE FINAL PLAT, WHEN RECORDED.

Eric B. Meurlott

08/08/2024



DATE: 8/7/24 JOB: 190610



7950 N. MEADOWLARK WAY, SUITE A
COEUR D'ALENE, IDAHO 83815

208-762-3644 | WWW.ARDURRA.COM